



Microsoft Project Online End-of-Life:

Your Path Forward with ServiceNow SPM



February 4, 2026

Ondaro and ServiceNow

Agenda >

1. Intro
2. Microsoft Project Online End-of-Life
3. ServiceNow SPM Overview
4. Demo
5. Q&A

Introductions



Jeff Butler

General Manager, Canada
Ondaro



Kevin O'Brien

Dir, Pri Sec Port/Prin Bus Con
Ondaro



Claudia Lee

Advisory Solution Consultant –
Strategic Portfolio Management
ServiceNow



David McPherson

Senior Solution Sales Executive –
Strategic Portfolio Management
ServiceNow

Ondaro is the only pure play ServiceNow partner with fully certified resources across the platform



ITSM



ITOM



ITAM



HRSD



CRM



SPM



SECOPS



IRM



APP ENGINE

ENVISION

Business Transformation

Organizational Change
Management

AI-Readiness

Platform Strategy &
Governance

IMPLEMENT & DEVELOP

Platform Architecture &
Engineering

Product Implementation

UX & UI Design

App Development

Data Management &
Integrations

MANAGE & OPTIMIZE

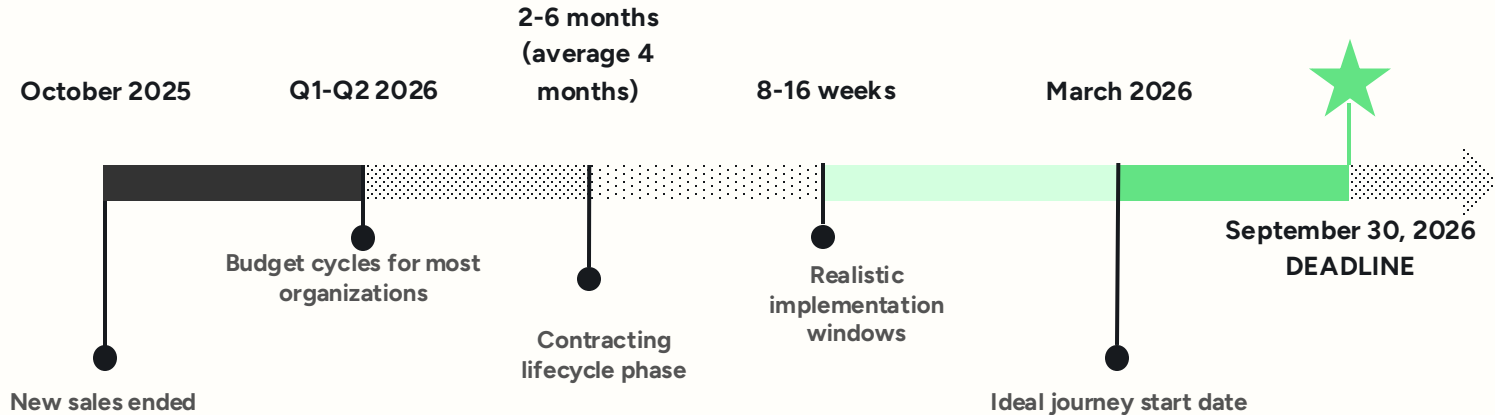
Platform Operations

Enhancement Services

Product Management

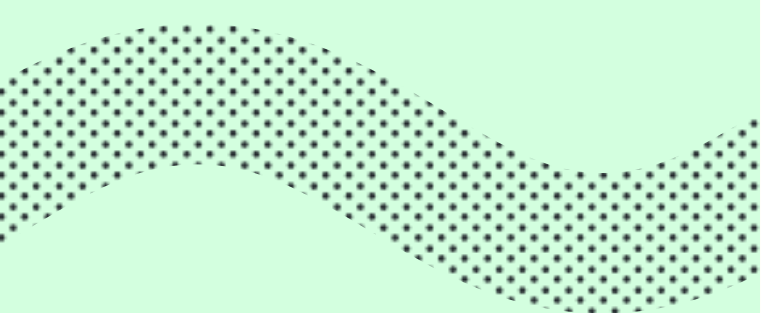
CALL TO ACTION:

Microsoft Project Online End-of-Life



What happens if you do nothing:

Data loss scenarios, operational disruption, compressed timelines forcing poor decisions



What Should Matter to a PMO Leader?

- Portfolio rollup and visibility
- Resource management depth
- Enterprise governance and compliance
- Integration with existing workflows
- Scalability as complexity grows

What Should Matter When Evaluating Alternatives?

Decision criteria for PMO leaders facing Project Online retirement

Portfolio Visibility

Rollup across projects, portfolios, and strategic initiatives

Resource Management

Capacity planning across all work types, not just projects

Enterprise Governance

Compliance, audit trails, and standardized processes

Workflow Integration

Connect projects to ITSM, ITOM, and operational systems

Methodology Flexibility

Support for waterfall, agile, and hybrid approaches

Scalability

Grow from departmental to enterprise without re-platforming

QUESTIONS PMO LEADERS NEED TO ASK

How are we planning to address the Project Online retirement deadline?

What visibility do we have into resource capacity across projects and operations?

How do we connect strategic objectives to the work being delivered?

How much time does our PMO spend consolidating data from multiple systems?

Microsoft's Recommended Paths – And Their Gaps

Neither option addresses enterprise strategic portfolio management needs

Planner Premium

CAPABILITY GAPS

Rebranded from "Project for the Web" – Microsoft's cloud-forward solution with modern UI and Copilot AI integration.

ENTERPRISE PMO GAPS:

- X No enterprise resource planning or capacity management
- X Limited financial management – no budgeting or ROI tracking
- X Basic portfolio views – no strategic alignment tools
- X No ITSM/ITOM integration capability

Project Server SE

INFRASTRUCTURE BURDEN

On-premises/Azure-hosted option maintaining familiar capabilities but requiring significant infrastructure investment.

MODERNIZATION GAPS:

- X Requires SharePoint Server + SQL infrastructure
- X No AI capabilities – legacy architecture
- X Security/compatibility updates only – no innovation
- X Siloed from enterprise operations

The Strategic Gap: Neither Microsoft option connects project execution with broader enterprise operations, IT service management, or digital transformation initiatives – creating significant opportunity to modernize, not just migrate.

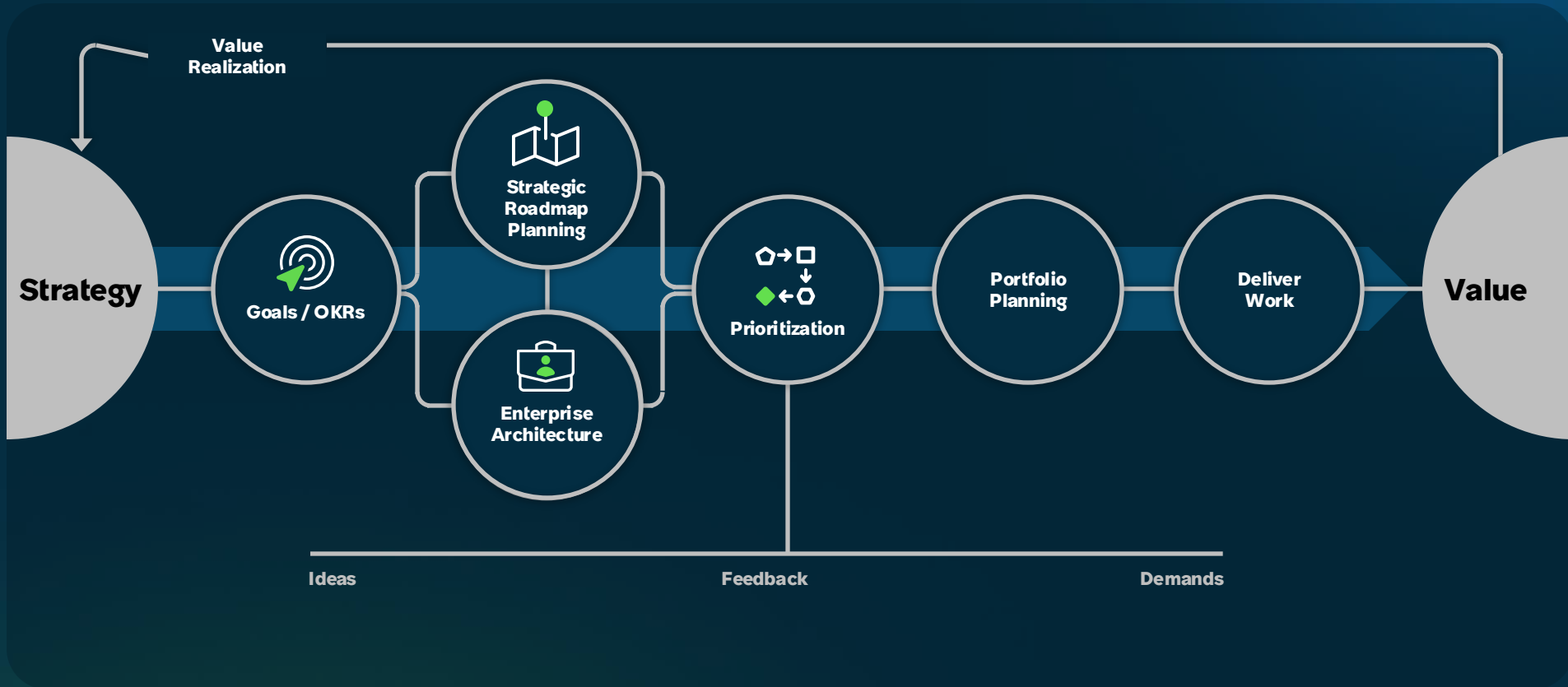
AUDIENCE POLL

What other platforms were you considering to replace Microsoft Project Online?

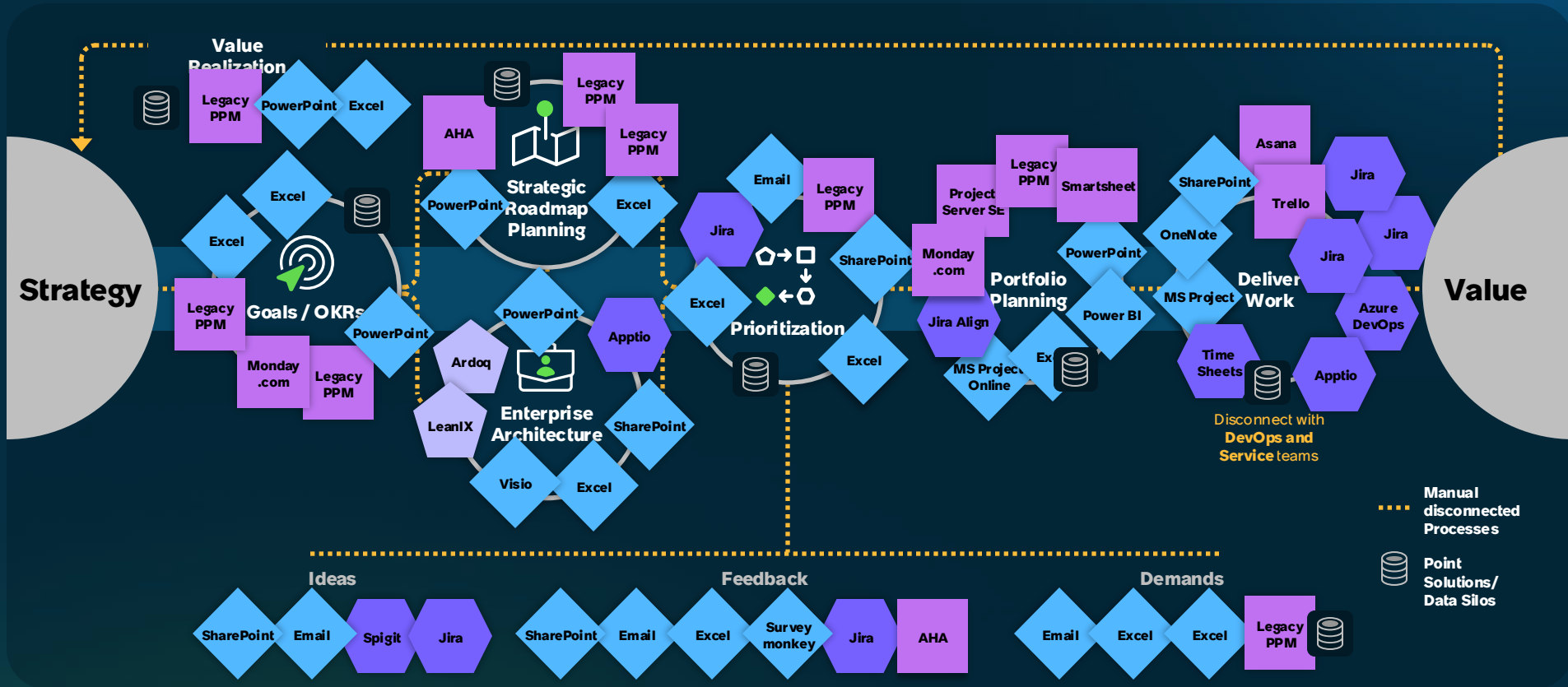
Share your
answers in
the chat!

Strategic Portfolio Management Overview

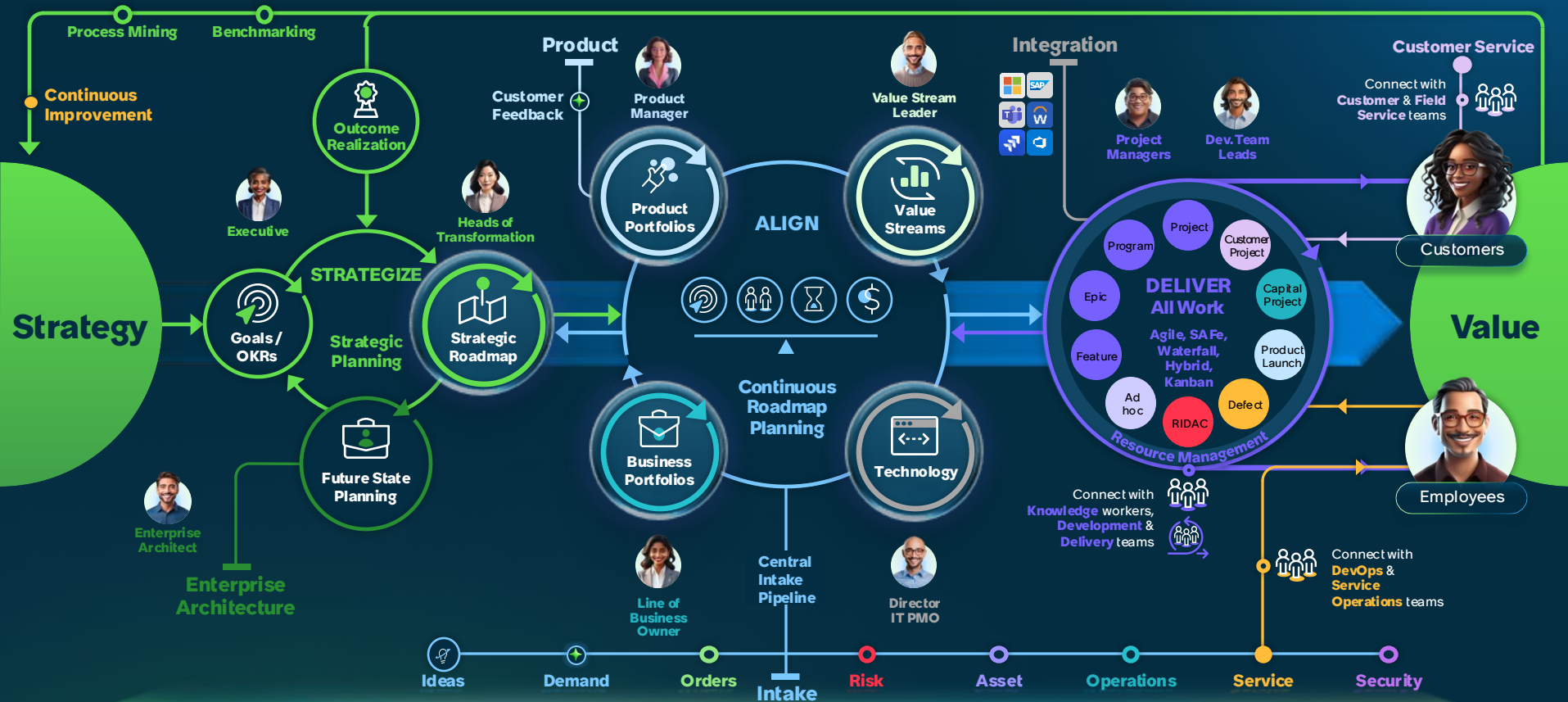
Siloed complexity impacting value realization



Siloed complexity impacting value realization



End-to-end visibility and insight



Why ServiceNow SPM Fills the Gap

Enterprise-grade strategic portfolio management with native AI and platform integration

Single Platform for All Work

Visibility into projects, agile work, incidents, changes, and service requests – complete picture of organizational capacity

Strategy-to-Execution

OKR framework and Strategic Planning Workspace – link work directly to strategic outcomes

Native AI with Now Assist

Predictive project health signals, intelligent resource recommendations, and automated risk identification

Enterprise Integration

Native connection with ITSM, ITOM, HR – see how projects impact services and manage resources

CAPABILITY COMPARISON

	Planner	Server SE	SPM
Strategic Alignment	Limited	Moderate	Strong
Resource Mgmt	Limited	Strong	Strong
AI Capabilities	Copilot	None	Now Assist
Platform Integration	M365	SharePoint	Full Stack
Work Visibility	Tasks	Projects	All Work
Future Investment	Active	Maintenance	Innovation

ANALYST RECOGNITION

"ServiceNow doubled down on its investment in SPM, and the results show."

— The Forrester Wave™: Strategic Portfolio Management Tools, Q2 2024 (Leader)

Why Transition to ServiceNow SPM?

From Standalone to Strategic

Unified Platform

Eliminate tool fragmentation. Projects, Service Management, Enterprise Architecture, Asset, and HR workflows on one platform—work items flow between them automatically without integrations to maintain

Flexible Project Methodology Support

SPM supports waterfall, agile, and hybrid methodologies out of the box—manage traditional projects, scrum, and SAFe within a single platform without third-party tools

Demand-to-Delivery Traceability

Connect the full lifecycle from demand intake through project execution to operational handoff in a single system

Financial, Resource, and Portfolio Governance

Native portfolio financials, scenario planning, cost roll-ups, resource planning, and time tracking—no reconciling exports across Project Online, Power BI, and Excel

Reduced Integration Burden

One platform, one data model—eliminate middleware, external Power BI dashboards, and manual data exports with native reporting built in

Autonomous Enterprise Workflows

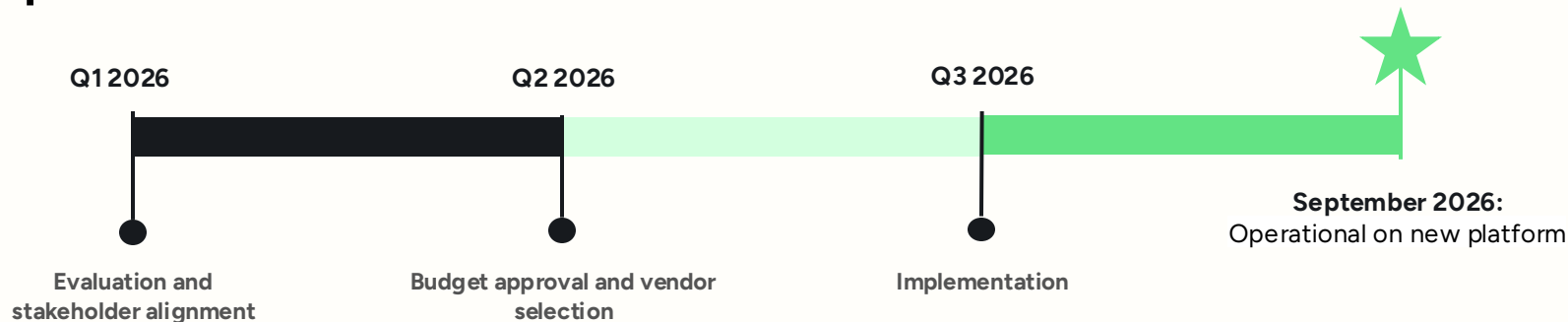
Now Assist and AI Agents automate approvals, surface risks, and take autonomous action across projects—intelligent automation built into the platform, not bolted on

᠑ndaro

Implementation Reality



Implementation with Ondaro



Lightweight (Project-only): 8-10 weeks, focused scope, rapid time-to-value

Standard PMO: 12-14 weeks, full capability deployment, phased approach available

What the journey looks like:

Discovery → Configuration → Migration → Enablement → Go-Live

- **Data migration:** Address the elephant in the room—how existing Project Online data transitions, considerations, and the challenges.
- **Legacy process:** an opportunity to look at your legacy processes.
- **Ondaro implementation methodology:** Partner credibility on delivery certainty

Questions to ask/action to take:

- Who needs to be involved?
- What's your budget?
- How long does approval take?
- Write and publish the RFP
- Gather team to review potential partners

Ondaro

Questions?

Email: inbound@ondarowave.com

Thank you!

